

The Swiss NF Metals Newsletter

"A Company For Dental Solutions"

Volume 1, Issue 4

Fall 2006

New Slot-Type Implant Lab Screwdriver



Be sure that you have the NEW Slot Driver Lab Implant Screwdriver. This new driver (brown handle) completes a set of six. Implant Lab Screwdrivers from Diamodent™ fulfill your lab's needs when doing implant work. No more searching for small implant drivers. These larger screwdrivers have an ergonomic handle with an efficient rotating tip for easy turning. They are available in a variety of colour-coded types: **.050" Hex, .048" Hex Long, Square, Unigrip®, SCS®** and the new **Slot Driver**. There is also a unique and convenient screwdriver holder that will rest on a bench or mount to a

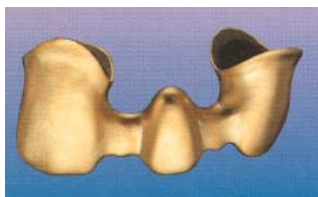
wall. Diamodent Lab Screwdrivers are reasonably priced when compared to some other implant companies. For maximum savings, consider the Lab Screwdriver Kit, which includes all six screwdrivers and the holder.



Code	Description	Price
T5550	* NEW * Slot Driver	\$ 39.50
T5500	.048" Hex Driver	\$ 39.50
T5510	.050" Hex Long Driver	\$ 39.50
T5520	Square Driver	\$ 39.50
T5530	UniGrip® Driver	\$ 39.50
T5540	SCS® Driver	\$ 39.50
T5580	Screwdriver Holder	\$ 16.50
T5590	Lab Screwdriver Kit	\$ 228.00



High Price of Gold Makes Aurofilm a Great Option



Aurofilm from Metalor is a unique, easy-to-apply product used to increase the esthetics on either precious or non-precious reconstructions. **Aurofilm 2000** is formulated of 99.99% pure gold particles suspended in an organic liquid. When applied to precious or semi-precious frameworks of PFM restorations, Aurofilm 2000 eliminates graying at margins and at other areas where the porcelain layer may be

too thin to adequately hide the darkness of underlying metal. It also brings out the natural vibrancy of porcelain shades and can enhance porcelain-to-metal bonding. **Aurofilm NP** is also a highly pure gold product (>99.95%) that is specifically formulated for use on CrCo and NiCr base metals. Aurofilm 2000 and NP are supplied as ready-to-use pastes. They are applied with a dry brush and then fired in a standard porcelain furnace (please refer to the instructions for each product). During the firing, the gold particles become sintered onto the alloy to form an evenly distributed and secure gold coating. No costly or specialized equipment is required for achieving the brilliant yellow, pure gold coating obtained with Aurofilm 2000 and NP.

Code	Description	Price
200004585	Aurofilm 2000 Gold Paste Kit	\$ 315.00
200004588	Aurofilm NP Gold Paste Kit	\$ 305.00



SWISS NF METALS, INC.

For More Information, Please Call 1-800-387-5031 or (416) 510-2220 (Sales-027)

The Swiss NF Metals Newsletter

"A Company For Dental Solutions"

Volume 1, Issue 4

Fall 2006

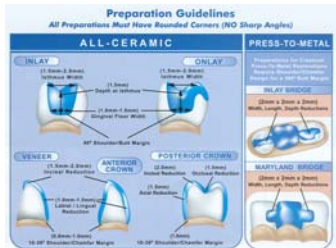
New Esthetic 'PE' Ingots for ^{SNF}PressCeram™



Swiss NF Metals has introduced the new, esthetic, 'Pearl-Effect' ingots for the ^{SNF}PressCeram™ system. The new esthetic PE ingots represent natural beauty with translucency, making for perfect all-ceramic veneers, inlays, onlays, and full crowns. Although the 'Layering Technique' can be used, the esthetic PE shading system is designed for use with the 'Stain & Glaze' technique. With ^{SNF}PressCeram™ stains, the technician can create natural beauty with every all-ceramic case. The shading system is easy and efficient. By taking a more 'universal' approach to shade availability, it reduces inventory for the lab and makes ingot shade selection easier. The shades and their function are detailed in the chart. The new esthetic PE ingots have all of the benefits of the original ^{SNF}PressCeram™ ingots: High Esthetics, Superior Fit of the Margin, Easy to Trim, Excellent Strength, Healing Cycle, etc. The prices of the new ingots are very competitive when compared to other pressable all-ceramic systems that exist. Please call us for more information!

Shade	Description	Translucency
PE10	Bleach	Neutral
PE01	Bleach	Medium
PE02	Bleach	Lower
PECO1	Bleach	Medium
PECT0	Bleach	Medium
PECT	Bleach	Neutral
PECT1	A1, A2, B1, B2, C1	High
PECT2	A3, A3.5, A4, D3	High
PECT3	B3, B4, D4	High
PECT4	C2, C3, C4	High

New ^{SNF}PressCeram™ Dentist Brochure Available



Make sure that you get the new ^{SNF}PressCeram™ Dentist Brochure. Not only is the literature a great marketing tool to sell the system to your Dentist, it is also a useful clinical information tool. On the back of the brochure is a preparation guide, giving the Doctor clear parameters for success with ^{SNF}PressCeram™ restorations. Along with the preparation guide, the brochure clearly states the cementation guidelines for both all-ceramic and press-to-metal. It is an excellent brochure to send to your Dentists to create interest in all-ceramic restorations. Call to order yours today!

The "Press & Stain" Ingots are Here!

Swiss NF Metals is proud to introduce the addition of the 'Press & Stain' Ingots to the ^{SNF}PressCeram™ System. The 'PS' ingots can be Pressed-To-Metal or Pressed-All-Ceramic to achieve perfect margins with beautiful esthetics. The dual-phased glass ceramic ingots are pressed at 920°C. They are true "value-based" ingots with a beautiful, natural translucency. There are four ingots (PS10, PS20, PS30 and PS40) available to achieve any shade from any shading system. Although the 'PS' Ingots are designed for the 'Press & Stain' technique, you can also layer



^{SNF}PressCeram™ porcelain on the pressed core if desired. The 'PS' Ingot Selection chart makes choosing the correct ingot simple. Also, having only four ingots to select reduces the laboratory's inventory as well as increases technician's productivity. The 'PS' Ingots create simplicity and beauty when creating restorations. Please call us for more information.



For More Information, Please Call 1-800-387-5031 or (416) 510-2220 (Sales-027)

The Swiss NF Metals Newsletter

"A Company For Dental Solutions"

Volume 1, Issue 4

Fall 2006

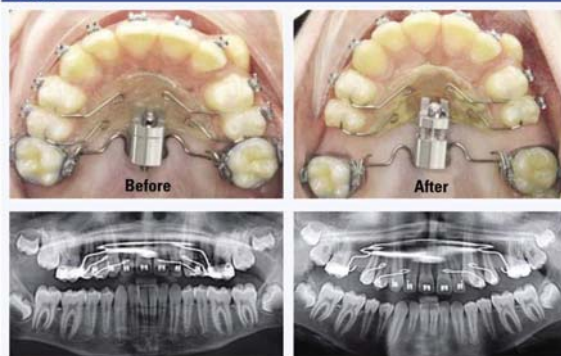
SNF Forestadent Frog Appliance



Distalizing maxillary first molars is often an objective in treatment plans involving Class II malocclusions and is sometimes indicated for non-extraction treatments for maxillary crowding. Patient compliance has become a factor in choosing effective orthodontic appliances. In recent years, various appliances that do not require patient compliance have been developed to drive maxillary molars distally. Some of these appliances produce

Patient cases

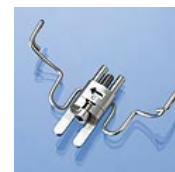
Case 1



unwanted tipping of the maxillary molars and a tendency to create cross-bites if not properly adjusted. While all of them have demonstrated successful molar distalization, they vary in difficulty of fabrication, delivery to the patient and ease of activation following delivery. The fabrication and delivery of the FROG Simplified Molar Distalizer is relatively simple and is very easy to activate from the anterior by simply turning the screw counterclockwise.



Code	Description	Price
169-1000	FROG Appliance Kit – 1 Patient (1 Screw, 1 Preformed Spring, 1 Screwdriver)	\$ 78.00
169-5000	FROG Appliance Kit – 5 Patients (5 Screws, 5 Preformed Springs)	\$ 298.50
100-1523	Screw drivers for FROG Appliance (5 Screwdrivers)	\$ 26.95



14" Straight Length Stainless Steel Wire



Over the last 20 years, the orthodontic profession in Canada has trusted SNF Forestadent with supplying quality wire materials. Whether you are looking for super-elastic, stainless steel, heat-activated, twisted, coated nickel-titanium, coaxial, beta-titanium or simple retainer wire, you will find that we have the solution.

We are featuring SNF Forestadent 14" Straight Length Stainless Steel Wire. They are packaged 10 pieces in a tube and are available in Round, Square and Rectangular shapes and in a wide variety of diameters. The popular shapes are listed below. Please give us a call for more information.

Code	Description	Price	Special*
201-4075A	14" Straight Length Round - .020" diameter	\$ 11.00	\$ 9.30
201-4105A	14" Straight Length Round - .028" diameter	\$ 11.00	\$ 9.30
201-4115A	14" Straight Length Round - .032" diameter	\$ 11.00	\$ 9.30
201-4125A	14" Straight Length Round - .040" diameter	\$ 11.00	\$ 9.30

* Special pricing and promotions within this newsletter are valid until December 31, 2006 and not valid with any other specials.



For More Information, Please Call 1-800-387-5031 or (416) 510-2220 (Sales-027)

The Swiss NF Metals Newsletter

"A Company For Dental Solutions"

Volume 1, Issue 4

Fall 2006

Swiss NF Metals is Growing Again!



We are proud to announce the addition of Rose Chung to the Swiss NF team. Rose joins Lore and Jennifer as Customer Service Representative. Born in Vietnam, she has been living in Canada for over six years. Speaking English, Vietnamese, and Cantonese, Rose is fluently trilingual. After attending Seneca College for Computer Science, she was employed at Premier Candle Company where she excelled at customer service. She is excited to work in the dental industry and eager to learn. Next time you call us, be sure to welcome Rose as the newest member of the Swiss NF Metals family.

Successful Attachment & Implant Courses

Swiss NF Metals was proud to sponsor Darwin Bagley from Attachments International, USA. Darwin arrived in Toronto from California to conduct three seminars/lectures regarding Attachments and Implant Components starting on May 31st. Swiss NF Metals held an evening seminar with 50 Dental Technicians. Darwin gave a general overview on attachments and implants. He also spoke about new developments in the implant and attachment field. Darwin also spoke to Clinicians in a seminar that was co-sponsored by Swiss NF Metals and Rotsaert Dental Lab on June 1st. He educated over 30 dentists with a general overview of attachments and their function. More importantly, Darwin spoke about case planning and troubleshooting with attachments. Finally, he ended his visit to Canada with a well-attended lecture at the Ontario Denturist's Meeting: 'Perfecting-Your-Practice'. He lectured to over 100 Denture Therapists and staff regarding over-denture attachments and implants and their use in practice. General clinical and technical procedures were discussed. He also emphasized bar restorations and options for their use. The troubleshooting portion of his presentation was also an appreciated topic. Swiss NF Metals looks forward to Darwin's next visit to Canada.



Spray Glaze Clearance Sale



All of the Enamilite Spray Glaze in inventory must be cleared out! Enamilite's™ **Nova™ Ceramic Spray Glaze** is compatible with all porcelain systems and constructions, ranging from Porcelain-Fused-to-Metal (PFM) to milled and pressed brand name processes with one firing. Enamilite's™ **HIGH-FUSING (940°C) & LOW-FUSING (760°C) Nova™ Ceramic Spray Glaze** is engineered to be compatible with both high-fusing and low-fusing porcelain systems. Nova™ Ceramic Spray Glaze is formulated to increase efficiency and productivity by allowing technicians to stain, add on contacts, and glaze in a single bake. It can be applied to single or multiple units in less than 10 seconds without distorting characterization stains or anatomical details. **Enamilite™ Spray Glaze is also the perfect material to enhance bonding of Zirconia restorations to natural dentition. Spraying the inside of the restoration will create an etchable surface so that debonding is less likely to occur.**

Code	Description	Price	Special*
EG-01	Enamilite Spray High-Fusing Glaze (6oz)	\$ 85.00	\$ 50.00
EG-01LF	Enamilite Spray Low-Fusing Glaze (6oz)	\$ 85.00	\$ 50.00

* Special pricing and promotions within this newsletter are valid until December 31, 2006, are not valid with any other specials and are valid while supplies last.

Opal White is Now Available for ^{SNF}PressCeram™

We have added Opal White layering porcelain to the ^{SNF}PressCeram™ system. With the widespread success of Opal Clear, Opal White is a natural addition to the system. As an incisal, Opal White gives the technician another tool for the system to create natural opalescence within restorations.



For More Information, Please Call 1-800-387-5031 or (416) 510-2220 (Sales-027)