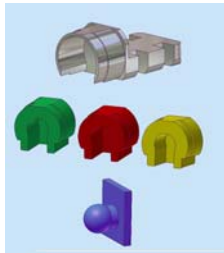
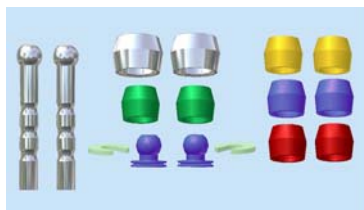


## The Allegro DE & OD Attachments Are Here!

The **Allegro DE** solid attachment is a simple yet effective extra-coronal distal extension attachment designed for removable precision partial dentures and implant bar dentures. The colour coded female inserts provide progressive degrees of retention and are easily replaced at chairside. The versatile **Allegro DE** can be positioned in a standard distal arrangement or at other aspects of the crown or bar framework – mesial/distal, buccal/lingual. The **Allegro DE** is available in two sizes, Micro & Regular and is available as a set which includes 2 MACHINED (not injected) plastic males, 6 female plastic inserts (2 Green, 2 Yellow & 2 Red) and 2 metal housings. Retention sequence from least to most is Green – Red – Yellow.



The **Allegro OD** is a ball and socket stud type attachment indicated for over-dentures or partial dentures. The **Allegro OD** features colour coded female inserts with various degrees of retention and precision MACHINED (not injected) plastic males. The female inserts are retained in a metal housing allowing them to be easily replaced at chairside. The retention sequence from least to most is Green – Red – Yellow – Blue. The plastic Allegro OD male elements are cast with a root cap coping or bar pattern. The **Allegro OD** snap attachment is available in two sizes, Regular & Micro.



**The Allegro attachments are a cost effective alternative to other similar distal extension and over-denture type attachments on the market!**

<b>Allegro DE Micro</b>	
<b>Female Height = 3.0mm, Female Diameter = 3.2mm, Male Diameter = 1.7mm</b>	
73-602010	Allegro DE Micro Complete (2) - includes 2 males, 6 female inserts (2 green, 2 red, 2 yellow), 2 housings
73-602012-G	Allegro DE Micro Female (4) Green
73-602012-R	Allegro DE Micro Female (4) Red
73-602012-Y	Allegro DE Micro Female (4) Yellow
73-602013	Allegro DE Micro Plastic Male (4) Blue
73-602154	Allegro DE Micro Metal Housing (4)
<b>Allegro DE Regular</b>	
<b>Female Height = 4.1mm, Female Diameter = 4.1mm, Male Diameter = 2.3mm</b>	
73-612010	Allegro DE Regular Complete (2) - includes 2 males, 6 female inserts (2 green, 2 red, 2 yellow), 2 housings
73-612012-G	Allegro DE Regular Female (4) Green
73-612012-R	Allegro DE Regular Female (4) Red
73-612012-Y	Allegro DE Regular Female (4) Yellow
73-612013	Allegro DE Regular Plastic Male (4) Blue
73-612154	Allegro DE Regular Metal Housing (4)
<b>Allegro OD Micro</b>	
<b>Attachment Height = 2.7mm, Female Width (with housing) = 3.5mm, Male Diameter = 1.7mm</b>	
73-400150	Allegro OD Micro Complete (2) - includes 2 males, 8 females (2 Green, 2 Red, 2 Yellow, 2 Blue), 2 spacers, 2 housings
73-400152-G	Allegro OD Micro Plastic Female Inserts (4) Green
73-400152-R	Allegro OD Micro Plastic Female Inserts (4) Red
73-400152-Y	Allegro OD Micro Plastic Female Inserts (4) Yellow
73-400152-B	Allegro OD Micro Plastic Female Inserts (4) Blue
73-400153	Allegro OD Micro Plastic Blue Males (4)
73-400154	Allegro OD Micro Metal Housing (4)
<b>Allegro OD Regular</b>	
<b>Attachment Height = 3.5mm, Female Width (with housing) = 4.3mm, Male Diameter = 2.3mm</b>	
73-410150	Allegro OD Regular Complete (2) - includes 2 males, 8 females (2 Green, 2 Red, 2 Yellow, 2 Blue), 2 spacers, 2 housings
73-410152-G	Allegro OD Regular Plastic Female Inserts (4) Green
73-410152-R	Allegro OD Regular Plastic Female Inserts (4) Red
73-410152-Y	Allegro OD Regular Plastic Female Inserts (4) Yellow
73-410152-B	Allegro OD Regular Plastic Female Inserts (4) Blue
73-410153	Allegro OD Regular Plastic Blue Males (4)
73-410154	Allegro OD Regular Metal Housing (4)
<b>Allegro DE &amp; OD Tools</b>	
73-602021	Allegro Micro Mandrel (OD & DE)
73-600165	Allegro Micro Analog (2)
73-400162	Allegro Micro Insertion Tool (OD & DE)
73-612021	Allegro Regular Mandrel (OD & DE)
73-610165	Allegro Regular Analog (2)
73-410162	Allegro Regular Insertion Tool (OD & DE)

# The Swiss NF Metals Newsletter

"A Company For Dental Solutions"

Volume 1, Issue 3

Spring 2006

## All Your Pressing Needs From 'AL - To - Z'



SNF **PressCeram™** is our flagship product that is very versatile. The system can be used for Press-To-Metal, All-Ceramic and also traditional Porcelain-Fused-to-Metal. It is an ideal system for combination cases! The ingots are available on many different shading systems (classical A-D, Staining & Bleach), opacities (20%, 30%, 50% & 70%) and sizes (2g, 5g & 10g). The ingot strength of 125 Mpa makes SNF **PressCeram™** comparable to most pressables on the market today. Ask us about our 'Healing Bake' cycle that is a true time & money saver! A competitive price combined with all of the product advantages makes SNF **PressCeram™** an excellent choice for your pressing system.



SNF **PressCeram™ -AL** is a system that allows the technician to Press-To-Alumina. The ingots can be pressed to any Alumina based sub-structures. Staining or Cut-back techniques can be easily utilized using the same ingots. Although a Liner is available in the system, it is NOT necessary. The Liner is only an option for when you need to mask the stark white opacity of the sub-structure. Although there are great advantages to pressing, SNF **PressCeram™ -AL** layering porcelain can also be used as traditional layering porcelain - without having to press. Whether you use Procera®, Wol-Ceram®, or In-Ceram®, it is an excellent system to create beautiful restorations.



Swiss NF Metals is excited to introduce SNF **PressCeram™ -Z/Ti**. Increase your productivity by Pressing-To-Zirconia. Cut-back or staining techniques can be used. The ingots are available in a variety of shades and opacities. Although SNF **PressCeram™ -Z/Ti** is primarily used for Pressing-To-Zirconia, the layering porcelain can also be used in the traditional build-up technique. The hidden gem of the system is the excellent capability to use the layering porcelain on Titanium frameworks. Whether you are building porcelain directly on a Titanium implant abutment or milling /casting Titanium, the Opaque is the key to creating beautiful aesthetics.



## White Die Spacer - Perfect for All-Ceramics

Talladium's **Die Spacer** is now available in White! Because of its neutral shade, applying white die spacer is perfect for all-ceramic restorations. All of Talladium's die spacers are easy to apply and quick to dry. Unlike other die spacers, Talladium die spacers will not chip or peel. Two coats will give you an accurate 28 micron thickness. Talladium die spacer is also available in Blue, Red, Orange, Silver and Yellow.



Code	Galileo™ Description	Price	Special*
12-727	White Die Spacer (½oz)	\$ 22.25	<b>\$ 20.75</b>
12-731	Die Spacer – Blue (½oz)	\$ 22.25	<b>\$ 20.75</b>
12-728	Die Spacer – Red (½oz)	\$ 22.25	<b>\$ 20.75</b>
12-732	Die Spacer – Orange (½oz)	\$ 22.25	<b>\$ 20.75</b>
12-726	Die Spacer – Silver (½oz)	\$ 22.25	<b>\$ 20.75</b>
12-729	Die Spacer – Yellow (½oz)	\$ 22.25	<b>\$ 20.75</b>



For More Information, Please Call 1-800-387-5031 or (416) 510-2220 (Sales-018)

## SNF Forestadent Introduces the Bite-Jumping Screw



No more acrylic work needed for progressive overjet reduction for the modified Twin Block appliance. The Twin Block appliance by Dr. William Clark is one of the most popular functional appliances for Class II, division 1 malocclusion treatment. Standard Twin Block appliances can only be reactivated by a time consuming procedure. This modification allows a progressive advancement of the bite, providing a greater orthopedic effect with less incisor tilting in Class II, division 1 cases. Progressive advancement of the mandible helps to

reduce tension in the craniomandibular muscles, therefore improving patient comfort and compliance. Easy and safe chairside reactivation of as much as 6 mm can be achieved by incorporating the solid stainless steel screw into the appliance. Chairside reactivations provide minimal inconvenience to staff and patient. This modified Twin Block has great advantages for patients with severe overjets or limited ability to advance their mandible for the construction bite.

Code	Description	Price	Special*
199-2622	Bite Jumping Screw (2)	\$ 45.75	<b>\$ 39.50</b>

## We Now Have All Four Talladium Diamonds

**Talladium's Diamond Burs** use natural coated diamonds – not synthetic. The versatile diamond is manufactured with a unique electrolysis process – not sintered. The initial layer of sponge nickel acts as a shock absorber for long lasting use. The outer layer of chrome locks the diamonds in place and yields a progressively hardened surface. **Talladium Diamond Burs** are ideal and recommended for use with Talladium Tilitite® Base Metals. Be sure to try the new X-2 cone shaped Diamond!



Code	Description	Price	Special*
12-600	T-2 Diamond – Large (1)	\$ 34.75	<b>\$ 32.95</b>
12-600-1	T-4 Diamond – Medium (1)	\$ 34.75	<b>\$ 32.95</b>
12-600-2	T-3 Diamond – Small (1)	\$ 34.75	<b>\$ 32.95</b>
12-600-3	X-2 Diamond – Cone (1)	\$ 34.75	<b>\$ 32.95</b>



## Solvest Makes it Easy to Solder!



**Solvest** is a premium grade soldering investment. It is designed to provide a better platform for soldering units. Having a 0.06% thermal expansion after heating assures more accurate positioning of a technician's work. **Solvest** is simple to use and mixes with plain tap water at a 5:1 powder-water ratio. Working time is 2 minutes, setting time is 4 minutes and hardening time is 15 minutes. **Solvest** is available in a 2 lb container with a wide mouth design for easy dispensing. Give it a try!

Code	Description	Price	Special*
96-U41904	MP Solvest (1 pint)	\$ 35.00	<b>\$ 33.25</b>

\* Special pricing and promotions within this newsletter are valid until June 30, 2006. Also, the specials in this newsletter are not valid with any other specials.



For More Information, Please Call 1-800-387-5031 or (416) 510-2220 (Sales-018)

# The Swiss NF Metals Newsletter

"A Company For Dental Solutions"

Volume 1, Issue 3

Spring 2006

## Check Out Our Updated Webpage!

We've given our website a fresh new look. It is a lot easier to navigate through the site. More detailed information and links were added to help you get accurate product details quickly. Check it out!

[www.swissnf.com](http://www.swissnf.com)

## Swiss NF Metals Welcomes Monarch Metals



Swiss NF Metals is proud to introduce Monarch Metals as the U.S. distributor of the <sup>SNF</sup>PressCeram™ pressing system. Jim Del Monte at Monarch Metals is based out of California and has many years experience in the dental industry. Both companies are excited to promote <sup>SNF</sup>PressCeram™ throughout North America because of its superior aesthetics, versatility, function, and fit. To kick-start the U.S. launch, Swiss NF Metals and Monarch Metals organized an excellent course on "Pressing Techniques" in Honolulu, Hawaii with Wayne Page, CDT. The 35 participants attending created both a press-to-metal and an all-ceramic restoration using advanced 'staining' and 'layering' techniques. Swiss NF Metals and Monarch Metals also had a booth promoting <sup>SNF</sup>PressCeram™ in Chicago at the Spectrum Techno-Clinical Day on February 24<sup>th</sup> at the Intercontinental Hotel. <sup>SNF</sup>PressCeram™ received some great responses and feedback from the U.S. market and was a big success!

## <sup>SNF</sup>PressCeram™ Introductory Course

Swiss NF Metals is proud to announce that we conducted a successful 2-day, hands-on, Introductory Course covering Press-To-Metal and All-Ceramic topics. The course was held in Toronto at George Brown College on January 21<sup>st</sup> & 22<sup>nd</sup> and was taught by Kerstin Beine, RDT. Participants were required to press and complete two <sup>SNF</sup>PressCeram™ restorations: One all-ceramic anterior using the 'cut-back and layering technique' and one press-to-metal posterior restoration using the 'staining technique'. The 'Healing Cycle' and PFM topics were also discussed. Please watch for information regarding our next introductory course expected to be schedule this Fall.



## ISO Announcements



Swiss NF Metals is proud to announce that we are certified to **ISO 13485:2003**. We successfully passed the audit that was conducted on January 23<sup>rd</sup> & 24<sup>th</sup>, 2006. Why do business with a certified company? In today's competitive business environment, effective management systems are indispensable. Companies want to be confident that they are doing business with an organization that can deliver goods and services in a timely manner and that meet their needs. Organizations that have achieved certification communicate to the market that they have successfully undergone a comprehensive, rigorous assessment and their process and organization meet defined standards of

quality. This ultimately instills trust and confidence in the organization's customers and prospects, and reinforces a commitment to quality.

In order to adhere to Health Canada's Medical Device Licence rules and regulations, Swiss NF Metals will NOT be able to accept OPENED packages of purchased product for credit regardless of the situation. To do so would cause serious implications for Swiss NF Metals and possible licence suspension. Thank you for your understanding and cooperation.



For More Information, Please Call 1-800-387-5031 or (416) 510-2220 (Sales-018)